



- 1
- 2
- 3
- 4

Appendix A

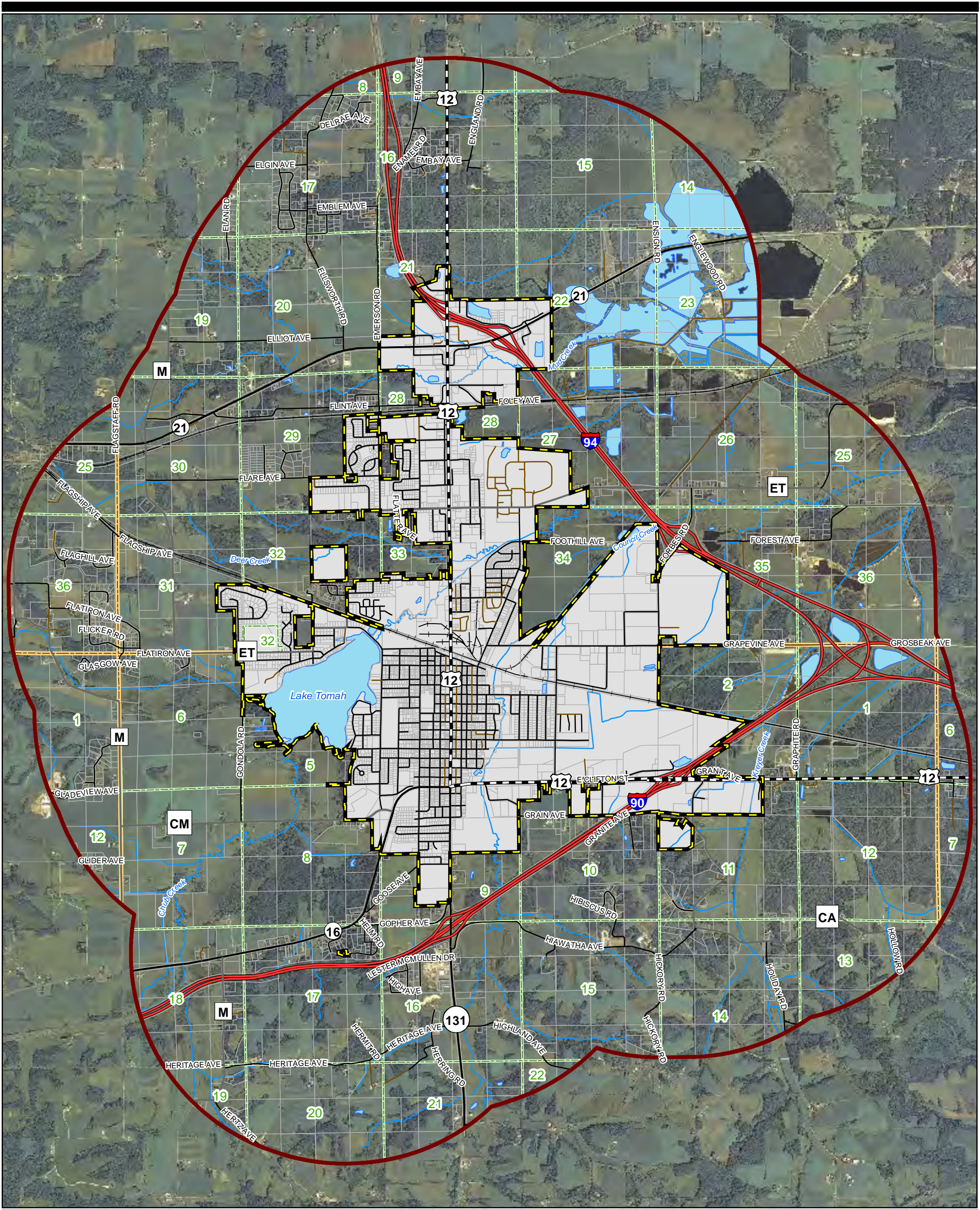
Appendix B

**Appendix C**

## **Planning Maps**

A set of the existing conditions and future land use maps within the City's entire plan area, including the 1 1/2 mile extraterritorial area.





City of Tomah

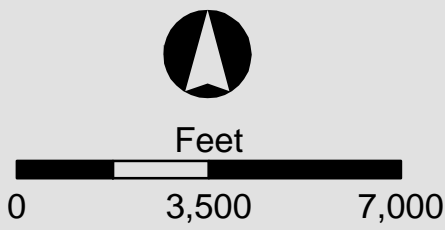
Monroe County, Wisconsin

# Base Map

# MAP-1

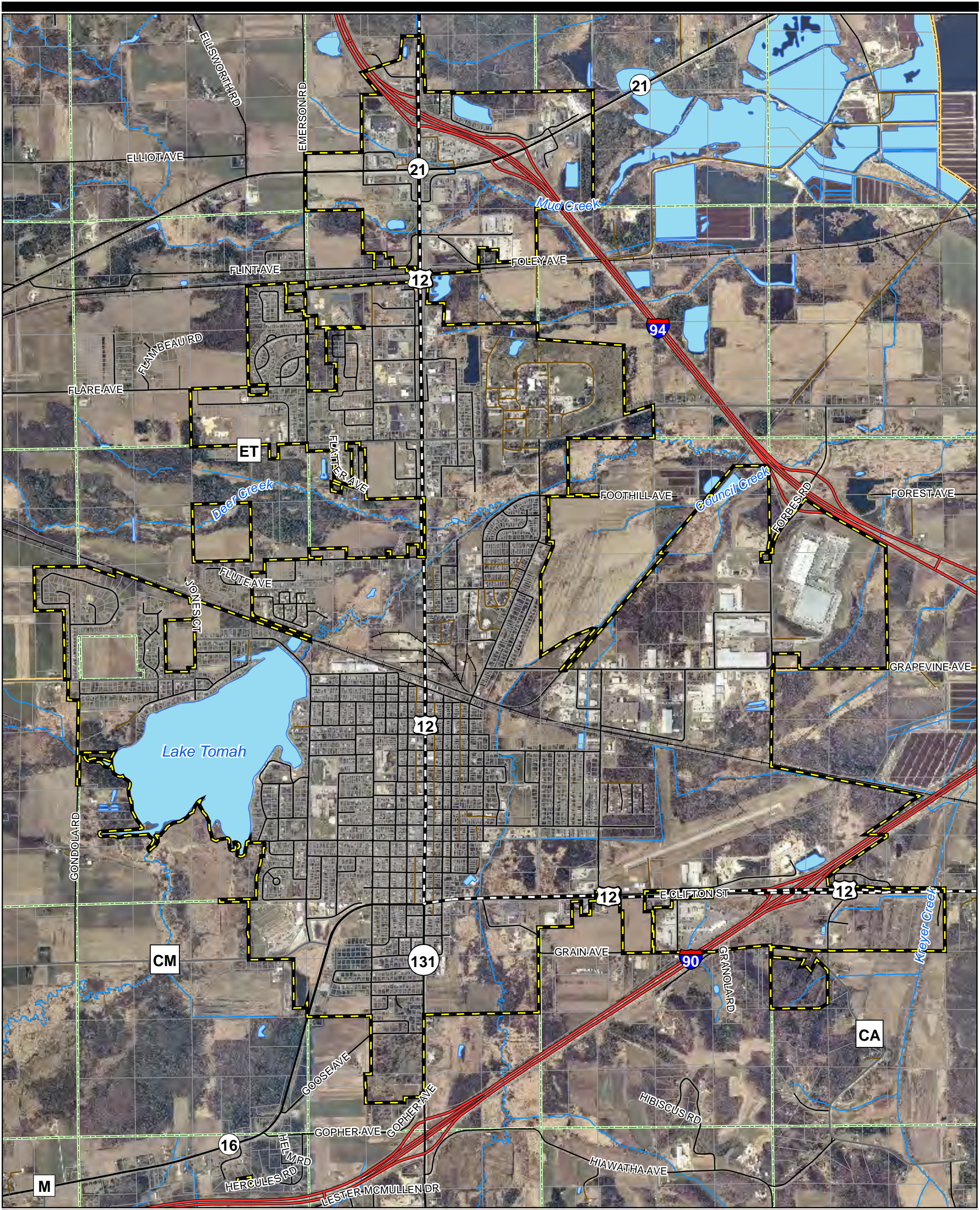
**Legend**

Planning Area	Sections	<b>Roads</b>	County
Tax Parcels	Lakes	Interstate	Local
Town Line	Streams	US	Private
Railroads	State		



Sources:  
 - County Base Data  
 - 2010 NAIP ortho provided by USDA





City of Tomah

Monroe County, Wisconsin

# Base Map

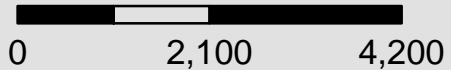
MAP-1A

### Legend

- |  |               |  |           |  |            |  |         |
|--|---------------|--|-----------|--|------------|--|---------|
|  | City of Tomah |  | Sections  |  | Roads      |  | County  |
|  | Tax Parcels   |  | Lakes     |  | Interstate |  | Local   |
|  | Town Line     |  | Streams   |  | US         |  | Private |
|  |               |  | Railroads |  | State      |  |         |



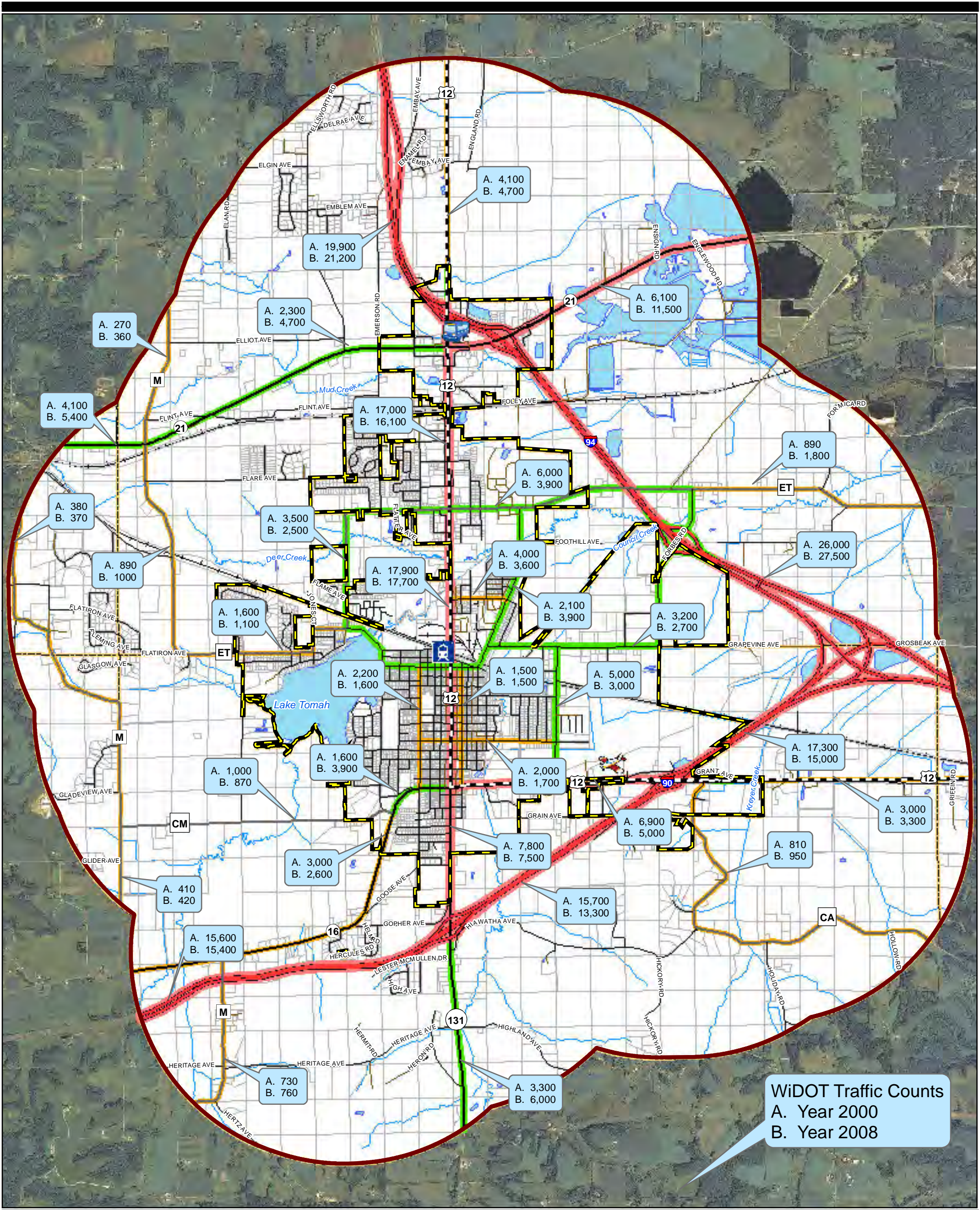
Feet



Sources:  
- County Base Data  
- 2010 NAIP ortho provided by USDA



PROFESSIONAL SERVICES



City of Tomah

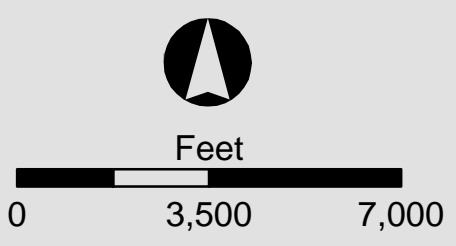
Monroe County, Wisconsin

# Transportation Facilities

MAP-2

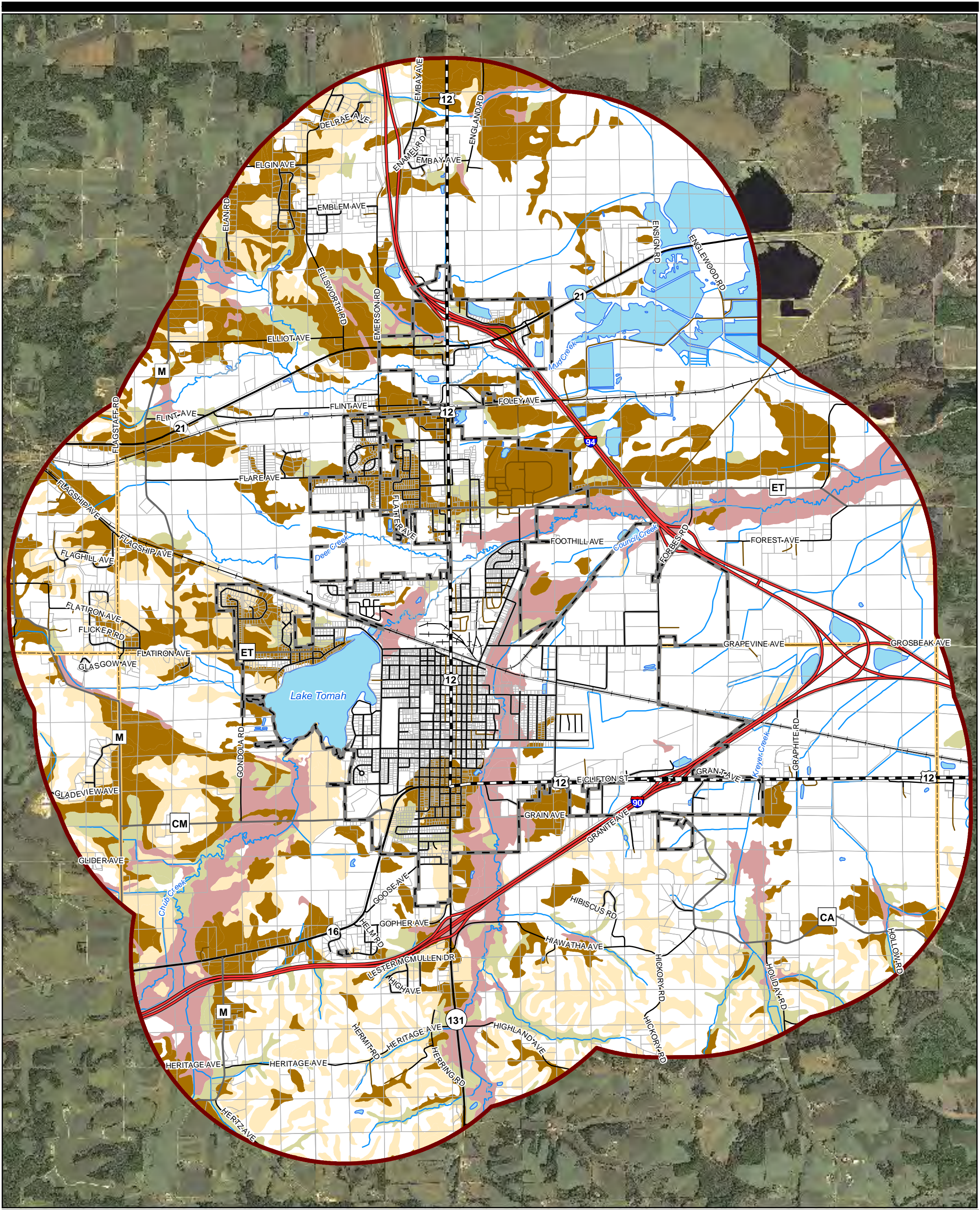
**Legend**

Symbol	Description
Red outline	Planning Area
Thin black line	Tax Parcels
Yellow outline	Town Line
Blue area	Lakes
Blue line	Streams
Black line with cross-ticks	Railroads
Red line with double red lines	Interstate
Black line with double black lines	US
Black line with single black lines	State
Black line with double black lines	County
Black line with single black lines	Local
Black line with single black lines	Local
Orange line	Collector
Green line	Minor Arterial
Red line	Principal Arterial
Blue square with train icon	Railroad Station
Blue square with airplane icon	Airport
Blue square with bus icon	Bus Station



Sources:  
 - County Base Data  
 - 2010 NAIP ortho provided by USDA





City of Tomah

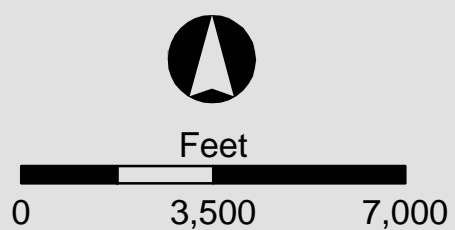
Monroe County, Wisconsin

# Productive Agricultural Areas

MAP-3

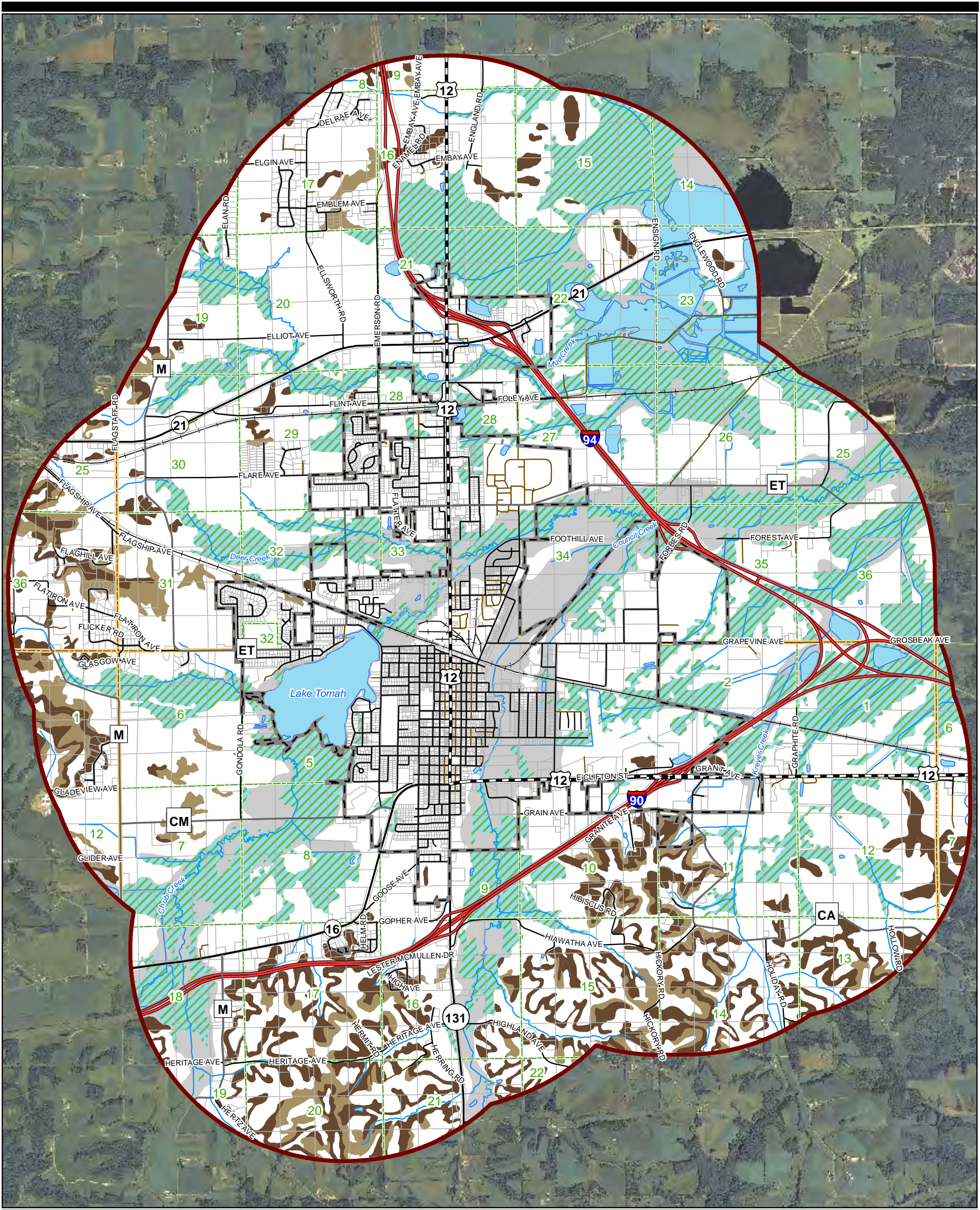
**Legend**

Planning Area	Town Line	Interstate	Not prime farmland
City of Tomah	Lakes	US	All areas are prime farmland
Tax Parcels	Streams	State	Prime farmland if drained
Railroads	County	Local	Prime farmland if drained and protected from flooding
	Private		Farmland of statewide importance



Sources:  
- County Base Data  
- 2010 NAIP ortho provided by USDA





City of Tomah

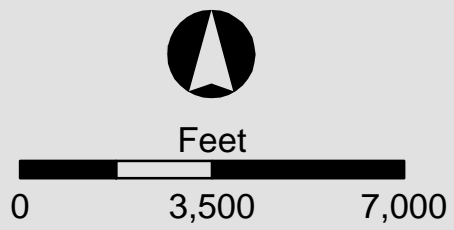
Monroe County, Wisconsin

# Development Limitations

MAP-4

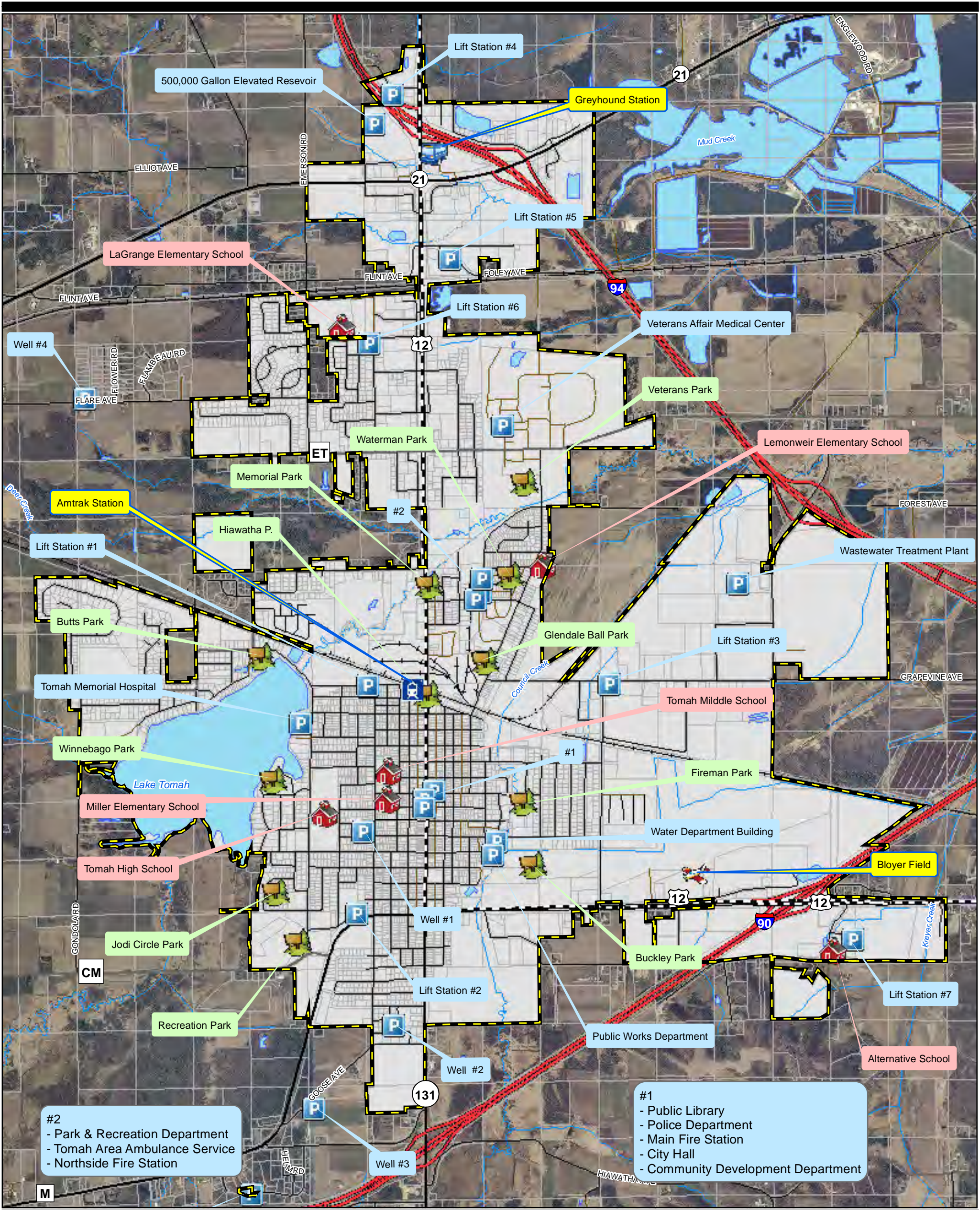
**Legend**

Planning Area	Railroads	State	Lakes	<b>NRCS Soils - Slope</b>
City of Tomah	<b>Roads</b>	County	Streams	
Town Line	Interstate	Local	Wetlands	12 - 20%
Sections	US	Private	Floodplains	20 - 25%
Tax Parcels				



Sources:  
- County Base Data  
- 2010 NAIP ortho provided by USDA





City of Tomah

Monroe County, Wisconsin

# Community and Public Facilities MAP-5

**Legend**

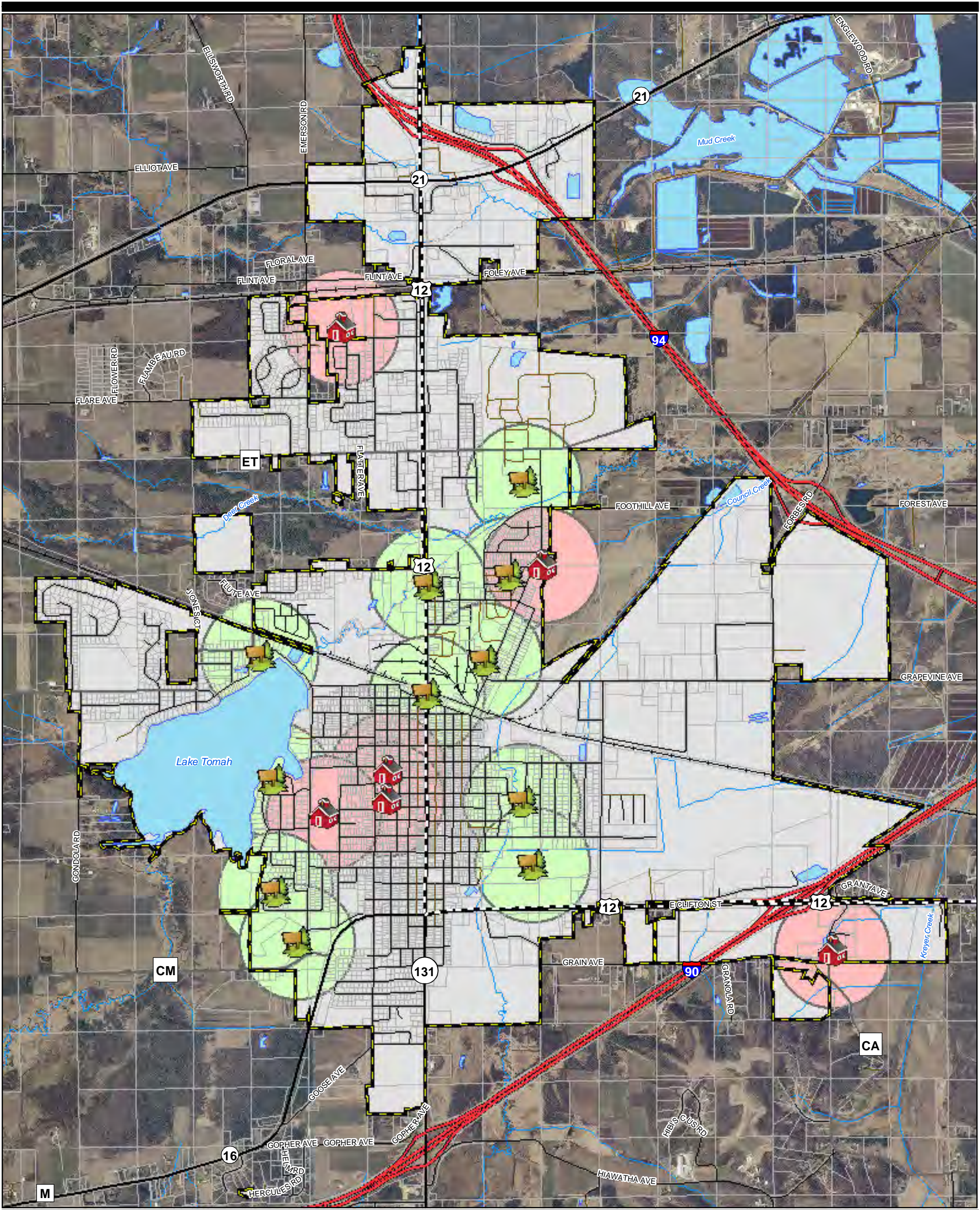
City of Tomah	Interstate	Education	Park/Rec
Tax Parcels	US	Airport	Government Building
Lakes	State	Bus Station	Railroad Station
Streams	County		
Railroads	Local		
	Private		

Feet

Sources:  
- County Base Data  
- 2010 NAIP ortho provided by USDA





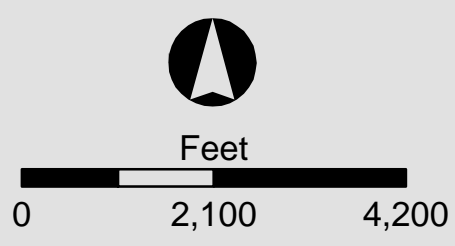


City of Tomah

Monroe County, Wisconsin

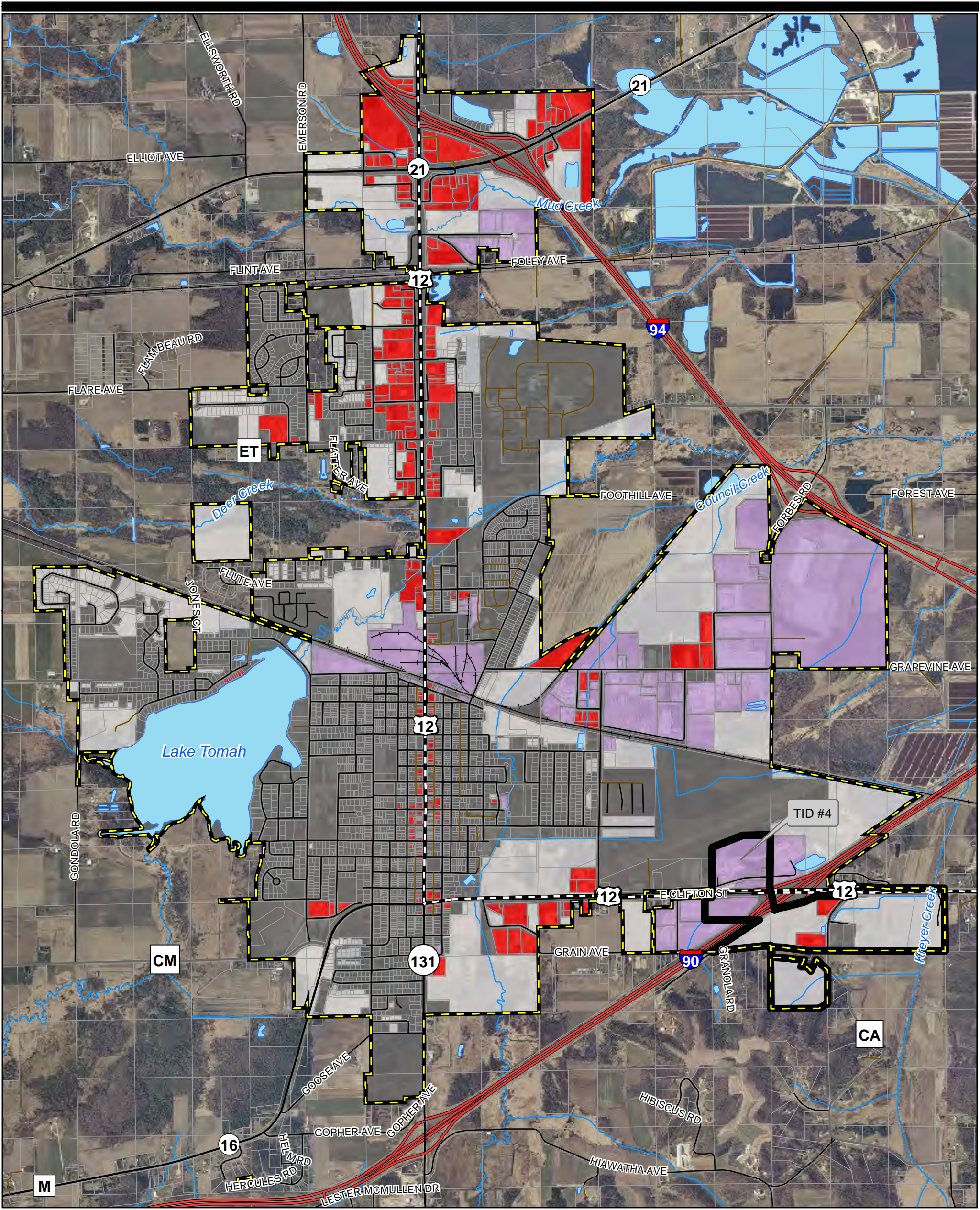
# Park Facility Walkable Service Areas MAP-6

Legend	
	City of Tomah
	Tax Parcels
	Lakes
	Streams
	Railroads
	Interstate
	US
	State
	County
	Local
	Private
	Education
	Park/Rec
	Education - Walkable Service Area
	Park/Rec - Walkable Service Area



Sources:  
- County Base Data  
- 2010 NAIP ortho provided by USDA





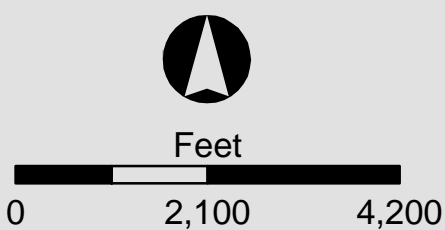
City of Tomah

Monroe County, Wisconsin

# Economic Development

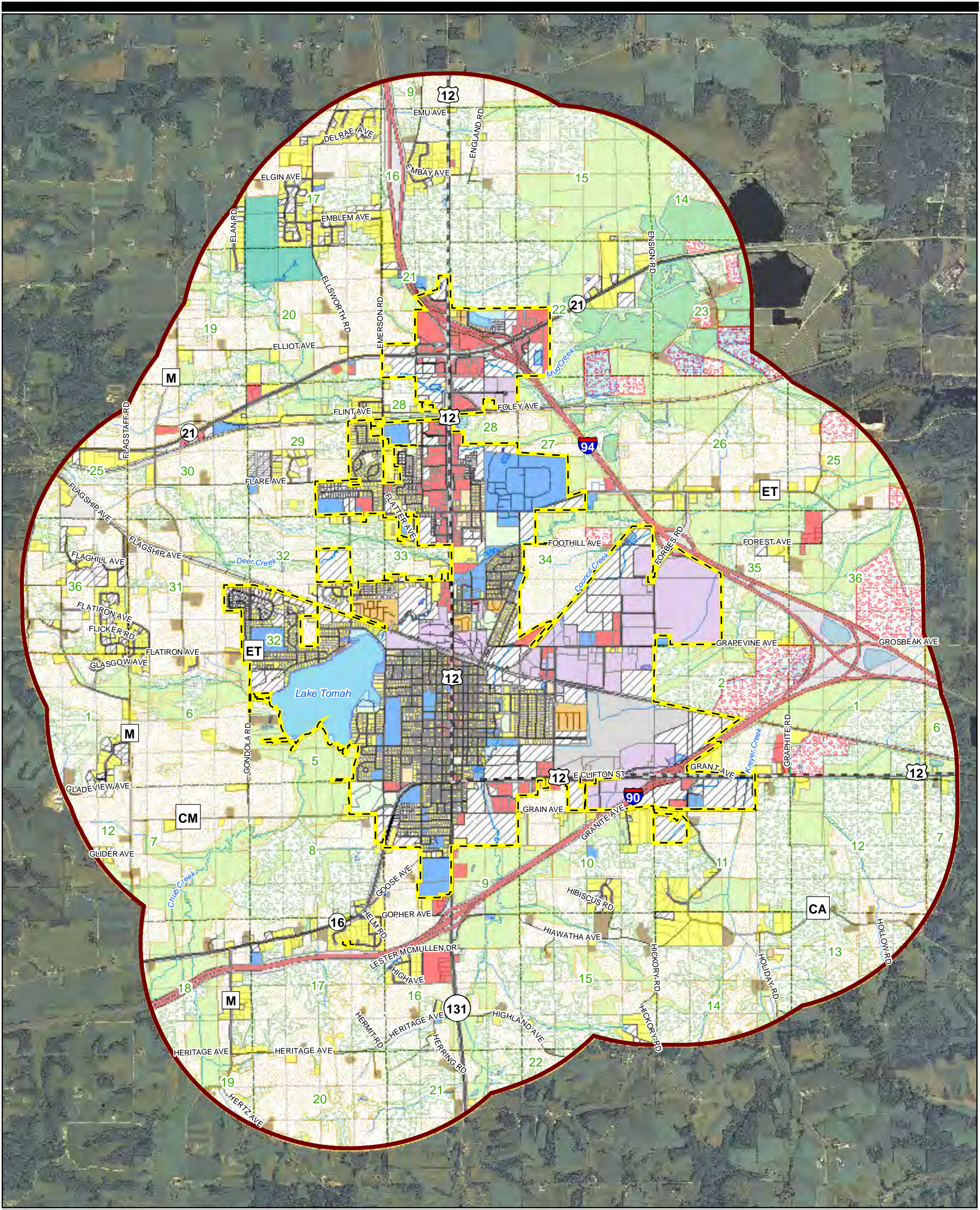
MAP-7

Legend			
	<b>Roads</b>		<b>Existing Land Use</b>



Sources:  
- County Base Data  
- 2010 NAIP ortho provided by USDA





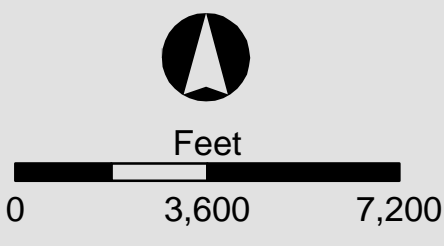
City of Tomah

Monroe County, Wisconsin

# Existing Land Use

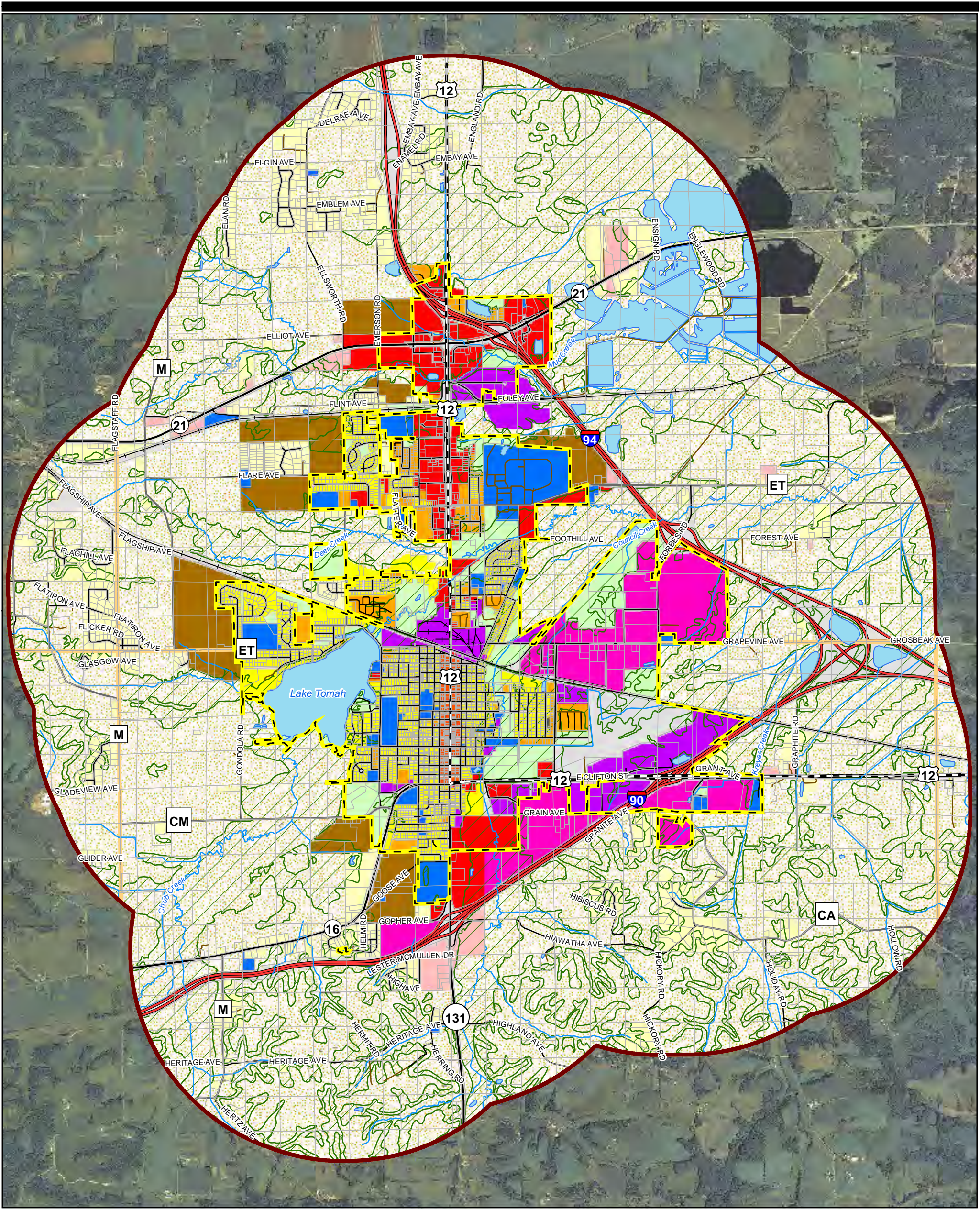
MAP-8

Legend			
Planning Area	Tax Parcels	<b>Roads</b>	<b>Existing Land Use</b>
City of Tomah	Lakes	Interstate	Farmsteads
Town Line	Streams	US	Agriculture
Sections	Railroads	State	Water Agriculture
		County	Open Space & Pasture
		Local	Single Family Residential
		Private	Multi-Family Residential
			Mobile Home Residential
			Golf Course
			Wooded Lands
			Transportation
			Open Water
			Wetlands
			Commercial
			Industrial
			Public & Institutional
			Parks & Recreation



Sources:  
- County Base Data  
- 2010 NAIP ortho provided by USDA





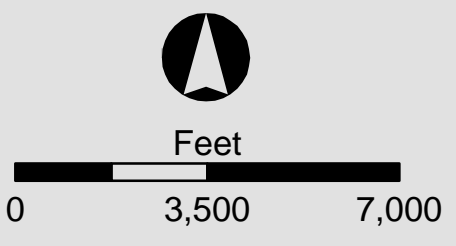
City of Tomah

Monroe County, Wisconsin

# Future Land Use

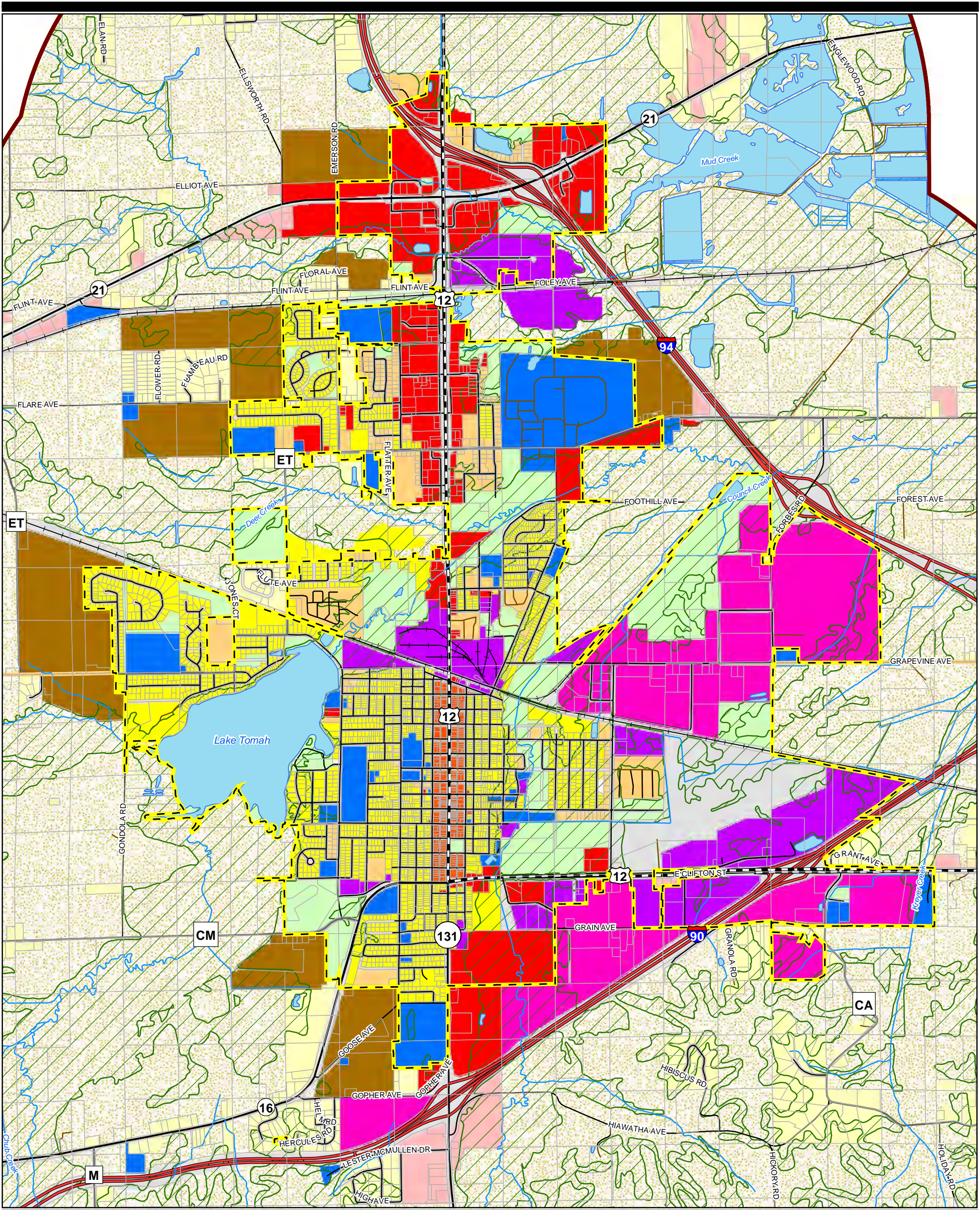
MAP-9

<ul style="list-style-type: none"> <li> Planning Area</li> <li> City of Tomah</li> <li> Town Line</li> <li> Tax Parcels</li> </ul>	<p><b>Roads</b></p> <ul style="list-style-type: none"> <li> Interstate</li> <li> US</li> <li> State</li> <li> County</li> <li> Local</li> <li> Private</li> </ul>	<ul style="list-style-type: none"> <li> Railroads</li> <li> Lakes</li> <li> Streams</li> </ul> <p><b>Future Land Use</b></p> <ul style="list-style-type: none"> <li> Rural Lands</li> <li> Rural Residential</li> <li> Rural Commercial</li> <li> Medium Density Residential</li> <li> High Density Residential</li> <li> Planned Neighborhoods</li> <li> Downtown Mixed Use</li> <li> Commercial</li> <li> Business Park</li> </ul>	<ul style="list-style-type: none"> <li> Industrial</li> <li> Public and Institutional</li> <li> Park and Open Space</li> <li> Transportation</li> <li> Natural Resource Protection</li> </ul>
--	---	--	---



Sources:  
- County Base Data  
- 2010 NAIP ortho provided by USDA





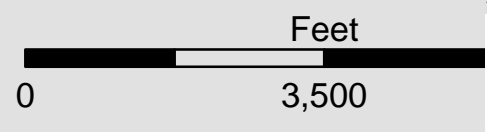
City of Tomah

Monroe County, Wisconsin

# Future Land Use

MAP-9A

<ul style="list-style-type: none"> <li> Planning Area</li> <li> City of Tomah</li> <li> Town Line</li> <li> Tax Parcels</li> </ul>	<p><b>Roads</b></p> <ul style="list-style-type: none"> <li> Interstate</li> <li> US</li> <li> State</li> <li> County</li> <li> Local</li> <li> Private</li> </ul>	<ul style="list-style-type: none"> <li> Railroads</li> <li> Lakes</li> <li> Streams</li> </ul> <p><b>Future Land Use</b></p> <ul style="list-style-type: none"> <li> Rural Lands</li> <li> Rural Residential</li> <li> Rural Commercial</li> <li> Medium Density Residential</li> <li> High Density Residential</li> <li> Planned Neighborhoods</li> <li> Downtown Mixed Use</li> <li> Commercial</li> <li> Business Park</li> </ul>	<ul style="list-style-type: none"> <li> Industrial</li> <li> Public and Institutional</li> <li> Park and Open Space</li> <li> Transportation</li> <li> Natural Resource Protection</li> </ul>
--	---	--	---



Sources:  
- County Base Data  
- 2010 NAIP ortho provided by USDA

