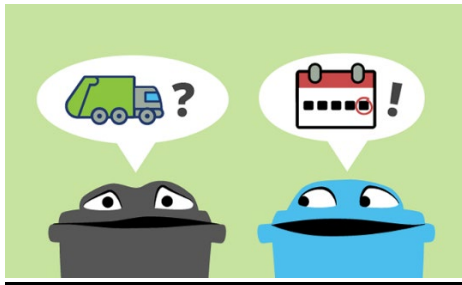


## RECYCLING AND GARBAGE TOTES

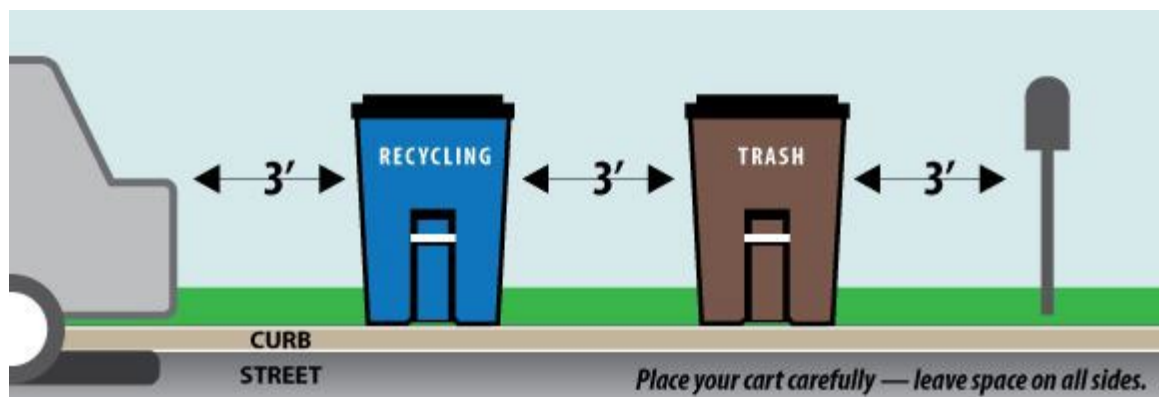


**MATTRESSES ARE NO LONGER A COLLECTIBLE ITEM. ANY MATTRESS ON THE CURB WILL BE TAGGED AND CITED AFTER 24 HRS. PUBLIC WORKS HAS THE RIGHT TO CHARGE THE PROPERTY OWNER A FEE FOR DISPOSAL IF NOT PROPERLY DISPOSED.**

The tote with a **yellow lid will be for garbage only**. The **tote with a gray lid will be for recycling only** and must be separated from normal garbage.

### TIPS ON HOW TO PLACE TOTES OUT:

- PLACE CART OUT BY 7AM.
- TOTE MUST BE PLACED 3 FEET AWAY FROM ANYTHING, INCLUDING THE OTHER TOTE.
- DO NOT PLACE TOTE UNDER TREE BRANCHES.
- LID MUST BE SHUT.
- ARROWS SHOULD POINT TOWARDS THE ROAD.
- PLACE TOTE AT END OF DRIVEWAY, IF POSSIBLE, OR IN BOULEVARD AREA, WITHIN 1 FOOT FROM CURB LINE.
- CLEARING SNOW AFTER EACH SNOWFALL WILL MAKE IT EASIER TO MOVE YOUR TOTE TO ITS COLLECTION POINT. TOTE SHOULD SIT FLAT AND NOT PLACED ON A SNOW BANK.
- DO NOT PLACE TOTES IN STREET.
- RECYCLING SHOULD NOT BE BAGGED; ITEMS NEED TO BE PLACED LOOSELY IN TOTE.



# ARE YOU RECYCLING CORRECTLY?

Recycling is picked up on **TUESDAYS & THURSDAYS ONLY**. Please refer to the **RECYCLING SCHEDULE MAP** to find your zone and your corresponding color on the calendar. We have tried to stay consistent with recycling days, due to holidays your day of the week may change. The tote with the gray lid is for recycling ONLY. Tote must be out by 7AM. Do not place items in bags; they must be placed loosely in tote. Businesses wishing to receive a recycling tote will need to contact Modern Disposal.

REMOVE CAPS & LIDS, RINSE & FLATTEN

**DON'T TANGLE OR CONTAMINATE  
RECYCLE MORE  
FOR A GREENER STATE**



<p><b>PLASTIC</b> Bottles, tubs, jugs and jars</p>  <p>No pumps Empty and rinse</p>	<p><b>METAL</b> All cans</p>  <p>Empty and rinse</p>
<p><b>GLASS</b> Bottles and jars</p>  <p>Empty and rinse</p>	<p><b>PAPER</b> Paper, cartons and cardboard</p>  <p>Flatten cardboard</p>

Look for these symbols on the bottom of products!



## KEEP THESE OUT OF RECYCLE TOTES!

- ⊗ All batteries (car, lithium, etc.)
- ⊗ Ceramic Items
- ⊗ Clothing or textiles
- ⊗ Diapers
- ⊗ Electronics
- ⊗ Food-tainted items (pizza box)
- ⊗ Household glass
- ⊗ Medical waste
- ⊗ Hazardous waste
- ⊗ Light bulbs
- ⊗ Paper toweling



- ⊗ Plastic bags/wrap
- ⊗ Scrap metal/wood
- ⊗ Shredded paper
- ⊗ Styrofoam/peanuts
- ⊗ Tanglers (cords, hoses, wires, etc.)
- ⊗ Tires
- ⊗ Tissue paper
- ⊗ Toys
- ⊗ Wax paper

# FACTS ON THE GARBAGE TOTE!

Garbage totes are picked up weekly. Please refer to the **GARBAGE SCHEDULE MAP** to find your zone. Your zone color will be the color you follow on the garbage pickup calendar.

**Due to holidays your day of the week may change on occasion.**

If you have any questions please call the Public Works Dept. at (608)374-7430.



The Sanitation Department will NOT pick up any additional trash outside of the city issued containers. You may purchase an additional automated collection container at City Hall for \$80.50+tax and a tipping fee of \$5.75/week. Initial payment will need to be paid at time of purchase. The amount will be pro-rated for the remainder of weeks left in the year. Consecutive years will be billed through the Public Works Department.

Frequently called about items, that go in the TRASH.

- Coated paper products
- Styrofoam
- Disposable diapers
- Food Wrappers
- Household Batteries
- Lightbulbs (no florescent)
- Paint cans must be completely dried up (ex. with kitty litter or newspaper)

## DO NOT PLACE IN TOTE OR ON CURB



### Construction Materials

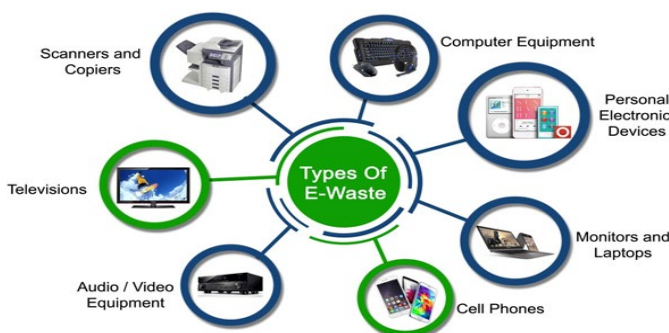
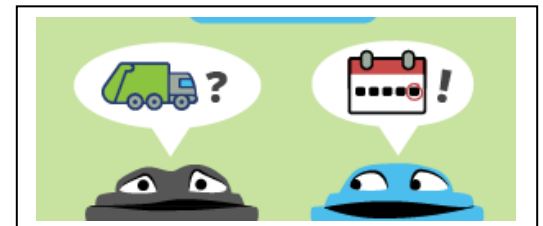
Roofing Materials, doors, bathtubs, shower enclosures, windows, sheetrock, brick, concrete, asphalt, kitchen cabinets, tarps etc. Please contact the Monroe County Landfill (608-269-8783) for details on how to dispose of these items.

### Hazardous Materials

Cleaners, solvents, gasoline, oil or other toxic, corrosive, explosive, or highly combustible materials may not be placed in the regular trash. Please contact the Monroe County Landfill (608-269-8783) for details on how to dispose of these items.

### Vehicle Parts

Vehicle parts and other metal weighing 10 pounds or more will not be collected. Take such items to a salvage yard.



## TVS & E-WASTE

- Each household is allowed to place two TV's out for collection a year.
- All other E-Waste can be placed on the curb the **FIRST FULL WEEK OF THE MONTH** for pickup.

# Yard Waste/Branches, Leaves, Large Item Pick Up



NO! Please do not place leaf piles in the street.

## LEAF VACUUM

The City of Tomah provides a leaf vacuuming service that usually begins the second week of October. The City may have to alter the schedule due to weather, equipment failure or resource limitations. Delays may occur, so your patience is appreciated. **Please keep leaves separated from brush.**

If we receive two or more inches of snow, the leaf vacuuming service will cease.



YES! Proper placement of leaf piles.

## BRANCH PICKUP

Branch pick up is scheduled for the **FIRST FULL WEEK** of each month-except during winter months. *Branches will not be picked up in the winter months.* Branches can be hauled to compost site by Bloyer Field at any

## YARD WASTE

Yard waste can be hauled to the compost site by Bloyer Field. (Branches, grass, leaves, hedge trimmings, pumpkins & garden waste)

## CHRISTMAS TREES

Christmas tree pickup starts the first week of January and continues for roughly three weeks. Tinsel, ornaments, lights, etc. must be removed. Trees placed in disposal bag will not be picked up. Artificial trees can be taken apart and placed in garbage tote.

## HOUSEHOLD ITEMS

Items such as couches, chairs, desks, dressers, etc. can be set out on the **FIRST FULL WEEK** of the month. No more than **TWO** items a month can be placed out at a time. **MATTRESSES AND BOXSPRINGS ARE NOT A COLLECTIBLE ITEM. NON-COLLECTIBLE ITEMS WILL BE TAGGED AND CITED AFTER 24HRS IF NOT REMOVED. PUBLIC WORKS HAS THE RIGHT TO CHARGE THE PROPERTY OWNER A FEE FOR DISPOSAL IF NOT PROPERLY DISPOSED.**

## MAJOR APPLIANCE DISPOSAL

Major appliances are defined as:

- Refrigerators/Freezers
- Stoves/Ovens
- Dishwashers
- Clothes washer & dryer
- Dehumidifiers
- Air Conditioners
- Furnaces
- Boilers
- Water Heaters
- Toilets

Please place item out the **FIRST FULL WEEK** of the month.

## TIRES

Please contact the Monroe County Landfill for disposal details and fees. (608-269-8783)

## CARPET

Large pieces of carpet can be set out on the **FIRST FULL WEEK** of the month. Items must be cut down, bundled and weigh less than 60lbs.

## FRIENDLY REMINDERS:

It is illegal to dump trash, leaves, grass clippings, branches, etc. in any gutter along any public street, alley, or highway. Placing these items in the gutter may create problems with our sewer system and may cause a backup.

One tote each, recycling & garbage, are issued to each city-serviced property. The totes have an identification number and are to remain at the address they are assigned. Any replacement totes will be at the expense of the property owner. The totes have a ten-year warranty; please contact us for information regarding the warranty coverage. If a second tote is purchased it becomes the property of the purchaser.

## **TOMAH WATER & SEWER PAYMENTS**

**SIGN UP FOR EMAIL BILLING AND/OR AUTOPAY TODAY AT PUBLIC WORKS OFFICE!**

Pay online at [tomahwi.gov](http://tomahwi.gov)  
or  
Call 1-844-756-0431

