

Utilities Permit Application

819 Superior Ave., Tomah WI 54660

Phone: 608-374-7430



Applicant Information

Address of work site: _____

Circle one: Single Family Multi Family Commercial Industrial Public

Applicant: _____ Address: _____

Phone: _____ Email: _____

State Plumbing License Information (REQUIRED)

Master Plumber or Utility Contractor #: _____

Business Name/Address: _____

Name all subcontractors (if any) (i.e. Excavation, concrete, asphalt restoration):

Service Size: _____ Installed By: _____

Meter Size: _____ Qty: _____ Private Fire Protection? Y or N
 $\frac{3}{4}$ " $\frac{5}{8}$ " 1" (etc.)

****SERVICE APPLICATIONS MUST BE FILED 3 DAYS PRIOR TO INSTALLATION****

New service lateral connections and street repairs are billed at actual cost. Any unused portion of deposit will be returned and any amount over and above deposited amount will be billed separately. Note: Excavations performed between November 1 and April 15 will be charged an additional \$500 for street maintenance.

	# of Units		Unit Price		Extended Price
Service lateral deposit: (City performs work)			\$ 3,500.00		
Meter connection charge (\$45 each)		X	\$ 45.00	=	
Street Maintenance (Excavating Nov. 1-April 15)			\$ 500.00		
Street Repair (Pavement, curb and gutter deposit)			\$ 2,250.00		
Total Due					\$

Work is subject to the following City and State of Wisconsin requirements, **Sec.38-EXCAVATIONS: PERMIT REQUIRED**. No person shall make, or cause to be made, any excavation or opening in any street, alley, highway, sidewalk or other public way within the City without first obtaining a permit from the Director of Public Works and Utilities or the Building Inspector.

INSURANCE IS REQUIRED. Prior to commencement of excavation work, the permittee shall furnish the Director of Public Works and Utilities or the Building Inspector satisfactory written evidence that insurance is in force and will be maintained during the life of the permit and the period of excavation. Public liability insurance, bodily injury of not less than \$500,000 for one person, \$500,000 for one accident and property damage of not less than \$1,000,000.

PENALTIES. Any person violating any provision of this chapter, including those provisions of the WI Statutes, WI Admin Code, or other materials, which are incorporated by reference, shall, upon conviction thereof, be subject to a penalty as provided in SS25.04 of this Code of Ordinances. **\$250 for first offense**

Estimated start date: _____ Completion date: _____

The applicant understands and agrees that the permitted work shall comply with all permit provisions and conditions listed on the attached form.

Signature of Authorized Representative Title Date

Permit approved and issued by: _____ Date: _____

Excavations:

- Excavations shall be made in such a manner that the pipe can be laid safely and accurately to the line and grade required
- All excavated materials to be used for trench backfill must be stored so that it will cause a minimum of inconvenience to public travel, adjacent owners and tenants.
- The contractor shall backfill the trench to the existing surface, with allowance for existing pavement and required base course and breaker run depths, if applicable, as soon as possible after the installation.
- The initial backfill material below (4") and above the top of the pipe shall be a minimum of one foot and placed by hand shall be $\frac{3}{4}$ " crushed stone and well compacted with hand tampers or jumping jack compactors.
- Compaction above the initial backfill area shall consist of mechanical means by use of a hydraulic compactor (hoe pack).

Approved materials:

Water:

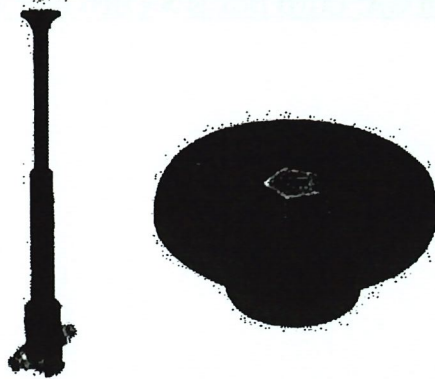
- Type "K" copper from main to curb box and three (3) feet beyond.
- Curb box – 1" arch style, Ford Brand, catalog #EA2-75-40-72R, 6' to 7.5' bury depth with 5' rod (see attachment) OR AY McDonald: 1" Upper arch pattern Box #601LR (7.5 ft) C.B., $\frac{1}{2}$ " stainless #5660 SS with 60" rod w/ 5607L plug style lid.
- Brass – **NO LEAD**

Sewer:

- PVC repair coupling (see attachment).
- "Strongback" ferncos only for main connections other than pvc (see attachment).
- **NO fernco tap saddles will be allowed.**

Inspection:

- Three (3) days notification prior to installation shall be given to one of the following:
- Tomah Sewer Department (608) 374-7434 or (608) 343-9600
- Tomah Water Department (608) 374-7433 or (608) 387-9197



Type PS-LID - Plug Style

Catalog Number	Extended Length	Rod Length	Approx. Wt. Lbs.
EA2-30-40-18R	3'	18"	14.0
EA2-35-40-24R	3-1/2'	24"	17.0
EA2-40-40-30R	4'	30"	16.0
EA2-45-40-36R	4-1/2'	36"	17.0
EA2-50-40-42R	5'	42"	19.0
EA2-55-40-48R	5-1/2'	48"	20.0
EA2-60-40-54R	6'	54"	21.0
EA2-65-40-60R	6-1/2'	60"	22.0
EA2-70-40-66R	7'	66"	24.0
→ EA2-75-40-72R	7-1/2'	72"	25.0
EA2-80-40-78R	8'	78"	26.0
EA2-90-40-84R	9'	84"	28.0

To order less stationary rod, remove the "-xxR" from the catalog number. Example: EA2-30-40

Section GA Last Modified: August 12, 2013

[Home](#) > [Products](#) > [Section GA: Curb Boxes](#) > [Curb Box Accessories](#)

**Stationary Rod
(Attach to Curb Stop
with Brass Cotter Pin)**

Catalog Number	Rod Length	Approx. Wt. Lbs.
ROD-18	18"	2.0
ROD-24	24"	2.0
ROD-30	30"	2.5
ROD-36	36"	3.0
ROD-42	42"	3.5
ROD-48	48"	4.0
ROD-54	54"	4.0
→ ROD-60	60"	4.5
ROD-66	66"	5.0
ROD-72	72"	5.5
ROD-78	78"	6.0
ROD-84	84"	6.0

Note: Keys for plug style (standard pentagon) bolt are listed in [here](#).

Stainless steel stationary rods and cotter pins are available, Add "-SS" to end of catalog number.

Section GA Last Modified: August 12, 2013

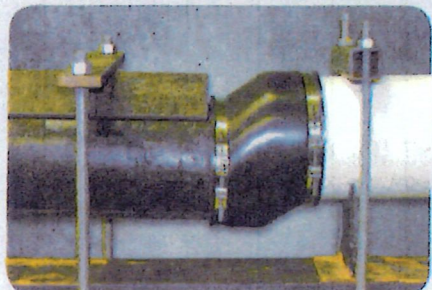
1000 RC Series & 5000 RC Series Couplings

The Ultimate Repair Couplings - Engineered for resistance to heavy earth loads and shear forces, while providing improved pipe alignment.

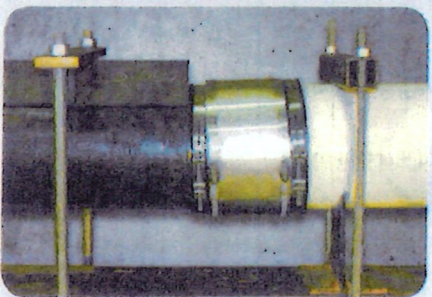


1000 RC Series
301 series stainless steel
worm gear clamps

5000 RC Series
316 series stainless steel
nut & bolt clamps



Shear Resistance Test using an unshielded sewer coupling per ASTM C 1173 (applied load 50 pounds per nominal inch of pipe diameter)



Shear Resistance Test using a Fernco Repair Coupling per ASTM C 1173 (applied load 50 pounds per nominal inch of pipe diameter)

TECHNICAL SPECS

Gasket

- Manufactured to meet the material requirements of:
 - CSA B602 - mechanical couplings for drain, waste, vent pipe and sewer pipe
 - ASTM D 5926 - Standard Specification for Poly Vinyl Chloride (PVC) Gaskets for Drain, Waste, and Vent (DWV), Sewer, Sanitary, and Storm Plumbing Systems
 - ASTM C 1173 - Standard Specification for Flexible Transition Couplings for Underground Piping Systems
- Hardness, Shore "A", Inst. +5..... 65
- Tensile Strength, Min. psi 1000
- Elongation at Rupture, Min. %..... 250
- Tear Strength, Min..... 150 lb/in.
- Brittleness Temperature..... -40°F

Worm Gear Clamps - 1000 Series

- Clamp Housing- 301 Stainless Steel
- Clamp Band - 301 Stainless Steel
- Clamp Screw - 305 Stainless Steel
- Installation torque 60 in-lbs

Nut & Bolt Clamps - 5000 Series

- Clamp Band - 316 Stainless Steel
- 6" and larger couplings incorporate two nut and bolt take-up points per band
- Installation torque 60 in-lbs

Shear Ring

- .012" Thick, 300 Series Stainless Steel
- Width manufactured according to coupling width (1.50", 2.13", or 4")
- Length manufactured according to coupling diameter
- Clamps spot welded in place

Coupling

- Manufactured to conform to the performance requirements of:
 - ASTM C 1173 - standard specification for flexible transition couplings for underground piping systems

Meets requirements of:

- **ASTM C 1173** - Standard Specification for Flexible Transition Couplings for Underground Piping Systems
- **ASTM D 5926** - Standard Specification for Poly Vinyl Chloride (PVC) Gaskets for Drain, Waste, and Vent (DWV), Sewer, Sanitary, and Storm Plumbing Systems
- **CSA B602** - mechanical couplings for drain, waste, vent pipe and sewer pipe



United States
PH: 810-503-9000
FX: 810-503-1015

www.fernco.com

Canada
PH: 519-332-6711
FX: 519-332-8610

T5813

1000 RC Series - Clay to Clay							
1000 RC SERIES	5000 RC SERIES	A	in	mm	B	in	mm
1001-44RC	5001-44RC	5.29	134	5.29	134	4.10	104
1001-44WCRC	5001-44WCRC	5.51	140	5.51	140	3.97	101
1001-64RC*	5001-64RC	7.50	191	5.50	140	6.02	153
1001-66RC	5001-66RC	7.50	191	7.50	191	6.02	153
1001-66WCRC	5001-66WCRC	8.00	203	8.00	203	6.00	152
1001-88RC	5001-88RC	9.65	245	9.65	245	5.99	152
1001-88WCRC	5001-88WCRC	10.00	254	10.00	254	6.00	152
1001-1010RC	5001-1010RC	12.40	315	12.40	315	5.90	150
1001-1010WCRC	5001-1010WCRC	12.40	315	12.40	315	5.90	150
1001-1212RC	5001-1212RC	14.51	369	14.51	369	6.38	162
1001-1212WCRC	N/A	15.25	387	15.25	387	6.42	163
1001-1515RC	5001-1515RC	18.14	461	18.14	461	9.89	251
1001-1818RC	5001-1818RC	21.90	556	21.90	556	9.63	245
1001-2424RC	N/A	28.97	736	28.97	736	9.89	251

1002 & 5002 RC Series - Clay to Cast Iron or Plastic

1000 RC SERIES	5000 RC SERIES	A	in	mm	B	in	mm	C	in	mm
1002-43RC*	5002-44RC	5.29	134	3.38	86	4.10	104			
1002-44RC	5002-44WCRC	5.36	136	4.51	115	4.07	103			
1002-44WCRC	N/A	5.44	138	4.55	116	3.96	101			
1002-46RC*	5002-46RC	5.13	130	6.60	168	5.74	146			
1002-55RC*	5002-55RC	6.60	168	5.50	140	5.74	146			
1002-64RC*	5002-64RC	7.50	191	4.50	114	6.02	153			
1002-64WCRC*	5002-64WCRC	8.00	203	4.50	116	6.00	152			
1002-64WCRC-SDR*	5002-66RC	8.00	203	4.38	111	6.00	152			
1002-66RC	5002-66WCRC	7.50	191	6.56	167	5.89	150			
1002-66WCRC	5002-86RC	8.04	204	6.38	162	5.91	150			
1002-88RC	5002-88RC	9.76	248	8.57	218	5.96	151			
1002-88WCRC	5002-88WCRC	10.00	254	8.66	220	6.00	152			
1002-1010RC*	5002-1010RC	12.40	315	10.75	273	5.90	150			
1002-1010WCRC*	5002-1010WCRC	12.40	315	10.75	273	5.90	150			
1002-1210RC*	N/A	14.51	369	10.60	269	6.00	152			
1002-1212RC*	5002-1212RC	14.51	369	12.60	320	6.38	162			
1002-1212WCRC*	N/A	15.25	387	12.60	320	6.42	163			
1002-1215RC*	N/A	14.38	365	15.25	387	6.42	163			
1002-1515RC*	5002-1515RC	18.14	461	15.40	391	9.89	251			
1002-1818RC*	5002-1818RC	21.90	556	19.00	483	9.63	245			
1002-2121RC*	N/A	25.46	647	22.30	566	9.89	251			
1002-2424RC*	N/A	28.97	736	25.00	635	9.89	251			

1003 & 5003 RC Series - Clay to AC or Ductile Iron

1000 RC SERIES	5000 RC SERIES	A	in	mm	B	in	mm	C	in	mm
1003-44RC	5003-44RC	5.41	137	4.94	125	4.07	103			
1003-66RC	5003-66RC	7.25	184	6.84	174	5.93	151			
1003-66WCRC*	N/A	8.00	203	6.80	173	6.00	152			
1003-68RC*	N/A	7.20	183	9.05	230	5.98	152			
1003-8-10RC*	N/A	9.65	245	11.22	285	5.97	152			
1003-88RC	5003-88RC	9.75	248	9.06	230	5.94	151			
1003-1010RC*	N/A	12.40	315	11.12	282	5.90	150			
1003-1212RC*	5003-1212RC	14.51	369	13.20	335	6.38	162			
N/A	5003-1516RC	18.10	460	18.10	460	9.89	251			
1003-1818RC*	N/A	21.90	556	19.50	495	9.63	245			

1004 & 5004 RC Series - Concrete to Concrete

1000 RC SERIES	5000 RC SERIES	A	in	mm	B	in	mm	C	in	mm
1004-44RC	5004-44RC	5.51	140	5.51	140	3.97	101			
1004-66RC	5004-66RC	7.58	193	7.58	193	5.94	151			
1004-88RC	5004-88RC	10.38	264	10.38	264	5.90	150			

1004-1010RC	5004-1010RC	12.40	315	12.40	315	5.90	150
1004-1212RC	5004-1212RC	15.25	387	15.25	387	6.42	163
N/A	5004-1212LCRC	15.25	387	15.25	387	6.42	163
1004-1515RC	N/A	19.74	501	19.74	501	9.89	251

1006 & 5006 RC Series - Concrete to Cast Iron or Plastic

1000 RC SERIES	5000 RC SERIES	A	in	mm	B	in	mm	C	in	mm
1006-44RC*	5006-44RC	5.64	143	4.51	115	3.97	101			
1006-64RC*	N/A	7.58	193	4.38	111	5.94	151			
1006-66RC*	5006-66RC	7.63	194	6.63	168	5.94	151			
1006-86RC*	N/A	10.38	264	6.38	162	5.90	150			
1006-88RC*	5006-88RC	10.49	266	8.63	219	5.90	150			
1006-1010RC*	5006-1010RC	12.40	315	10.75	273	5.90	150			
1006-1212RC*	5006-1212RC	15.25	387	12.60	320	6.42	163			
1006-1515RC*	N/A	19.74	501	15.40	391	9.89	251			

10051 & 5051 RC Series - AC or Ductile Iron to Cast Iron or Plastic

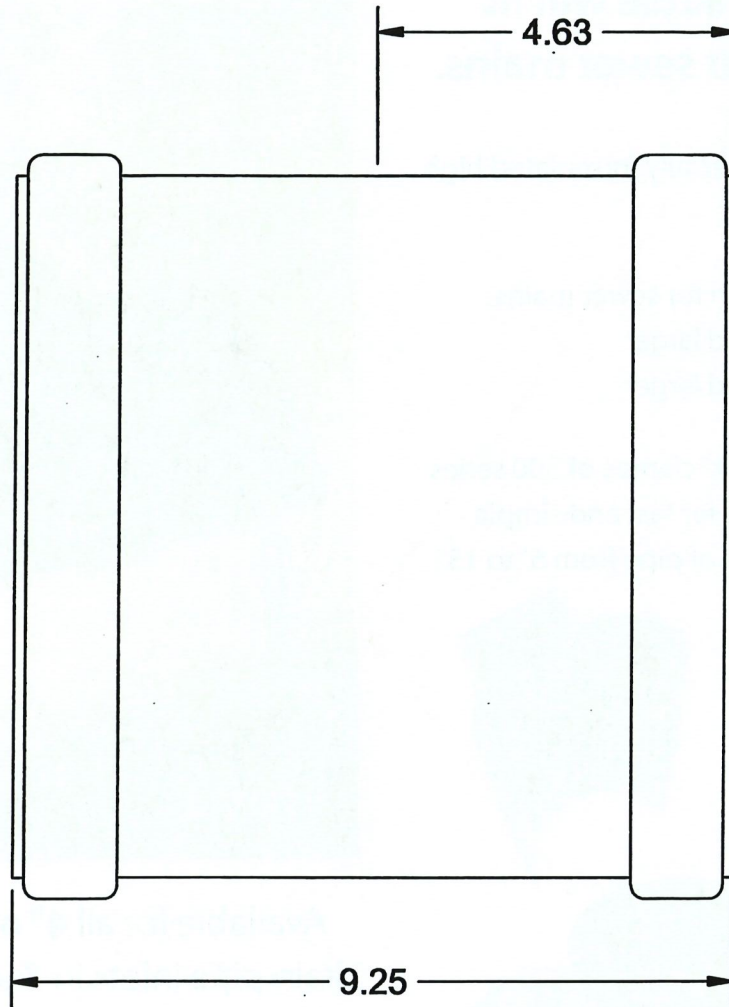
1000 RC SERIES	5000 RC SERIES	A	in	mm	B	in	mm	C	in	mm
1051-44RC	5051-44RC	4.80	122	4.39	112	3.94	100			
1051-45RC*	N/A	5.00	127	5.52	140	3.97	101			
1051-46RC*	5051-46RC	4.75	121	6.60	168	5.74	146			
1051-55RC*	N/A	5.90	150	5.50	140	5.92	150			
1051-64RC*	5051-64RC	6.95	177	4.38	111	5.92	150			
1051-65RC*	N/A	6.95	177	5.50	140	5.92	150			
1051-66RC	5051-66RC	6.69	177	6.69	170	5.91	150			
1051-8-10RC*	N/A	9.05	230	10.63	270	5.89	150			
1051-88RC	5051-88RC	9.25	235	8.51	216	5.97	152			
1051-10-8RC*	N/A	11.02	280	8.38	213	5.97	152			
N/A	5051-1010RC	11.02	280	10.52	267	5.85	148			
1051-1212RC*	5051-1212RC	13.37	340	12.60	320	5.97	152			
N/A	5051-1615RC	18.14	461	15.40	391	9.89	251			
1051-1818RC	N/A	19.74	501	19.74	501	9.89	251			

10055 & 5055 RC Series - AC or Ductile Iron to AC or Ductile Iron

1000 RC SERIES	5000 RC SERIES	A	in	mm	B	in	mm	C	in	mm
1055-44RC	5055-44RC	4.75	121	4.75	121	3.96	101			
1055-66RC	5055-66RC	6.65	169	6.65	169	5.92	150			
1055-88RC	5055-88RC	9.05	230	9.05	230	5.98	152			
1055-1212RC	5055-1212RC	13.37	340	13.37	340	5.97	152			

10056 RC Series - Cast Iron, Plastic, Copper, Steel or Lead

1000 RC SERIES	5000 RC SERIES	A	in	mm	B	in	mm	C	in	mm
1056-150RC	N/A	1.94	49	1.94	49	3.43	87			
1056-22RC	N/A	2.41	61	2.41	61	3.45	88			
1056-32RC*	N/A	3.52	89	2.38	60	3.96	101			
1056-33RC	N/A	3.46	88	3.46	88	3.98	101			
1056-43RC*	5056-43RC	4.58	116	3.38	86	4.02	102			
1056-44RC	5056-44RC	4.58	116	4.58	116	4.02	102			
1056-54RC*	5056-54RC	5.52	140	4.38	111	3.97	101			
1056-55RC	5056-55RC	5.52	140	5.52	140	3.97	101			
1056-64RC*	5056-64RC	6.60	168	4.50	114	5.74	146			
1056-65RC*	N/A	6.60	168	5.62	143	5.74	146			
1056-66RC	5056-66RC	6.60	168	6.60	168	5.74	146			
1056-86RC*	N/A	8.64	219	6.63	162	6.04	153			
1056-88RC	5056-88RC	8.64	219	8.64	219	6.04	153			
1056-1010RC	5056-1010RC	10.63	270	10.63	270	5.89	150			
1056-1212RC	5056-1212RC	12.52	318	12.52	318	6.32	161			
1056-1515RC	5056-1515RC	15.92	404	15.92	404	9.89	251			
1056-1818RC	5056-1818RC	19.10	485	19.10	485	9.89	251			
N/A	5056-2424RC	25.10	638	25.10	638	9.89	251			



GPKE
PRODUCTS, INC.

FOR REFERENCE ONLY

DIMENSIONS SUBJECT TO CHANGE

TITLE

**8" REPAIR COUPLING GxG
D3034/F1336 SDR 35 PSM PVC**

1-800-437-4670

FARGO, ND

DATE 01-11-13

SCALE NONE

PART NO. 106-0008

Not Acceptable

Flexible Tap Saddles

The faster & less costly way to make sewer main connections

One **Fernco** Saddle will fit
ALL 6" and larger sewer mains.

- Manufactured from a specially formulated high durometer PVC.
- Rigid, yet flexible enough for sewer mains:
 - 4" saddles fit 6" pipe and larger
 - 6" saddles fit 8" pipe and larger
- Includes special "slip-lock" clamps of 300 series stainless steel that make for fast and simple installations on any type of pipe from 6" to 15".
- Larger apron with locating ring fits 5" or 7" standard shell cutters.
- Large band grooves



TST-4



Available for all 4" or 6" plastic or cast iron
drain pipe inlets in **Tee or Wye** configurations.

PART #	Description
TST-4	4" Cast Iron or Plastic Inlet - Tee Tap Saddle
TST-6	6" Cast Iron or Plastic Inlet - Tee Tap Saddle
TSW-4	4" Cast Iron or Plastic Inlet - Wye Tap Saddle
TSW-6	6" Cast Iron or Plastic Inlet - Wye Tap Saddle
312-300	Extension Clamps - For larger than 15" sewer mains
TSPK-46	Tap Saddle Pressure Kit - For a water tight seal

 **Fernco**
Inc.